



Sanitary accessories

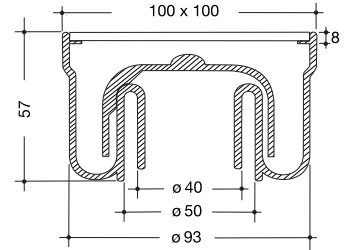
Waste system



CGPSAN07GB

Floor wells 10 x 10 for tiled flooring

- Vertical outlets : Ø 40/50/93 mm.
- 57 mm height - 28 mm water seal.
- Flow-rate : 0,7 l/second.



PVC body, frame and grid in white colour.

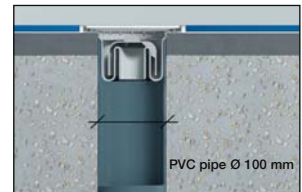
SIHJ10



PVC body and frame in white colour, grid in stainless-steel.

unlocked
grating locked

SIHJ10I
SIHJ10V



PVC body in white colour, frame and grid in stainless-steel.

unlocked
grating locked

SIHJ10CI
SIHJ10CV



Floor wells vertical outlet Ø 32 mm

- 71 mm height - 26 mm water seal.



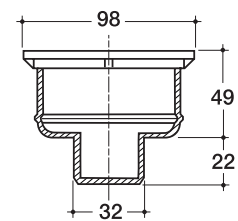
PVC body and grid in light grey

SIF

Swivel plate in PVC in light grey

10 x 10
15 x 15

PL10FH
PL15FH



Floor wells 10 x 10 horizontal outlet

- 82 mm height - 50 mm water seal.



PVC body and grid in light grey

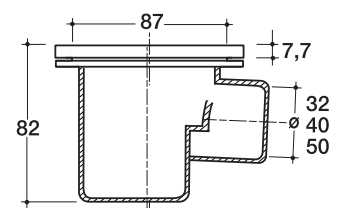
horizontal outlet Ø 32 mm
horizontal outlet Ø 40 mm
horizontal outlet Ø 50 mm

SICF
SICH
SICJ

Swivel plate in PVC in light grey

10 x 10

PLC10FH



uPVC Trapped floor-drains

GRIDS AND
COVERS



SWIVEL PLATES



BODIES



COVERS

Description	Product code		
	light grey	white	Ivory
Plate 20 x 20 cm with U.PVC cover	PTSMX20	PTSMX20B	PTSMX201
Plate 20 x 20 cm with U.PVC grid	PGSMX20	PGSMX20B	PGSMX201
Plate 15 x 15 cm with U.PVC cover	PTSMX15	PTSMX15B	PTSMX151
Plate 15 x 15 cm with U.PVC grid	PGSMX15	PGSMX15B	PGSMX151
Plate 20 x 20 cm with stainless steel grid and cover	PISMX20	PISMX20B	PISMX201
Plate 15 x 15 cm with stainless steel grid and cover	PISMX15	PISMX15B	PISMX151

BODIES

Extension piece 125 spigot - 125 socket	ZXSIT		
Body 50 x 50 x 50 mm inlet - 63 mm outlet	KFSEMX		
Body 40 x 40 x 40 mm inlet - 50 mm outlet	KFSEMXG		

Trapped floor-drains must not be installed on roadways.



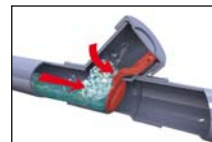
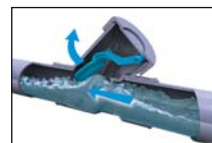
NICOLL other products...

Non return valve in PVC



For horizontal pipework.
Access clean out.

Product code	ø (mm)
CASF4	32
CASH4	40
CASJ4	50



Flexible couplings



Ideal for renovation.
Smooth inner surface.
Optimum outflow.
uPVC ends.

Product code	ø (mm)	Lenght (mm)
female/female		
FLEXF	32	206
FLEXH	40	224
FLEXJ	50	241
male/female		
FLEXFM	32	207
FLEXHM	40	224
FLEXJM	50	243



Flexible WC connectors



Flexible part in PVC.
Smooth inner surface.
uPVC ends.

Product code	ø (mm)	Lenght (mm)
1DENFLEX	110/106/103	430
1CENFLEX	110/106/103	530



Extendable WC connectors



Extendable from 250 to 570 mm.
Perfect water tightness by gluing PVC ends.
Keeps the desired position.

Product code	ø (mm)	Lenght (mm)
1MEMFLEX	110/106/103	Min 250 maxi 570



an OAliaxis company

Head office and plants :
P.O. Box 10966 - Rue Pierre et Marie Curie
49309 CHOLET CEDEX FRANCE
Tel. 33 2 41 63 73 83 - Fax 33 2 41 63 73 57
Website : www.nicoll.fr - www.nicoll.com
e-mail : export.nicoll@aliaxis.com
SAS au capital de 7 683 431 € - 060 200 128 RCS Angers



document non contractuel

2007