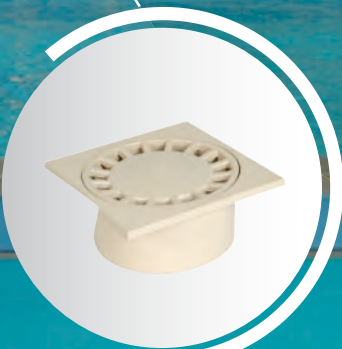
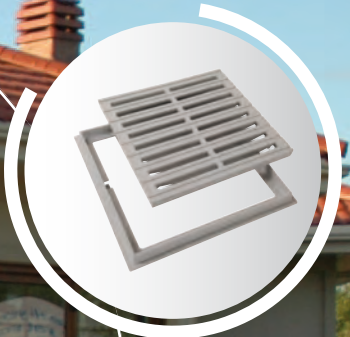
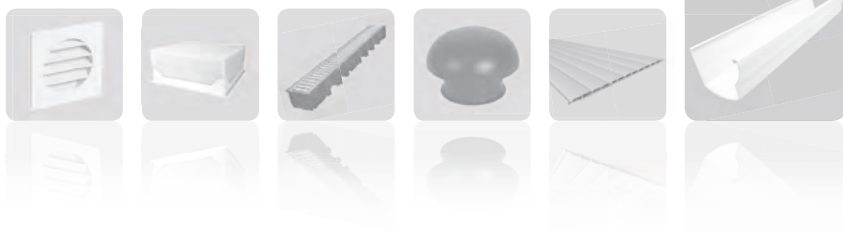


SURFACE DRAINAGE PRODUCTS



BUILDING
SANITARY
ENVIRONMENT



BUILDING - SANITARY - ENVIRONMENT



UV resistant with an A15 loading class

PVC ground grids



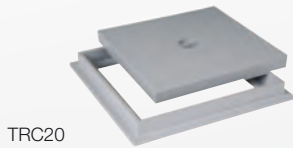
GRC30S



GR25

Product code		Dimensions	Packaging	
Grey	Sand			
GRC20	GRC20S	200 x 200	10	
GRC25	GRC25S	250 x 250	10	
GRC30	GRC30S	300 x 300	5	
GRC40	GRC40S	400 x 400	5	
GR20	GR20S	200 x 200	10	
GR25	GR25S	250 x 250	10	
GR30	GR30S	300 x 300	5	
GR40	GR40S	400 x 400	5	

PVC inspection covers



TRC20

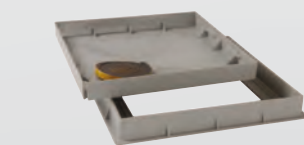


TR40

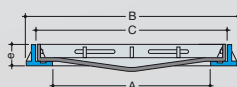
Product code		Dimensions	Packaging	
Grey	Sand			
TRC20	TRC20S	200 x 200	10	
TRC30	TRC30S	300 x 300	5	
TRC40	TRC40S	400 x 400	5	
TR20	TR20S	200 x 200	10	
TR30	TR30S	300 x 300	5	
TR40	TR40S	400 x 400	5	

PVC inspection frames and covers

- Easy to install,
- Labour-saving,
- Smell proof.



CTR4



Product code	Dimensions	Dimensions in mm		Packaging	
CTR3	30 x 30	A	250 x 250		
		B	327 x 327		
		C	285 x 285		
		e	42		
CTR4	40 x 40	A	300 x 300	5	
		B	420 x 420		
		C	390 x 390		
		e	50		
CTR5	50 x 50	A	420 x 420	5	
		B	540 x 540		
		C	510 x 510		
		e	50		



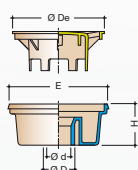
PVC trapped floor gullies

UV resistant with an A15 loading class

Model with internal spigot/socket connection

- Higher water seal,
- Larger flow,
- Less bulky,
- Possibility to fix the grid (self-threading screws $\varnothing 3,5$ with $L = 22$ mm maxi not supplied).

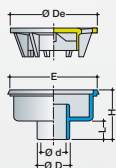
SC089S



ØD	Ød	Product code				Dimensions				Packaging
		Dark grey	Light grey	Sand	White	Water seal	Ø De	E	H	
50	40/63	SC456	SC456G	SC456S	SC456B	21	139	150	63	6
80	90	SC089	SC089G	SC089S		36	182	200	92	4
90	80/100	SC891	SC891G	SC891S		36	230	250	96	4

Plain model with vertical outlet

SC1009G

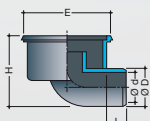
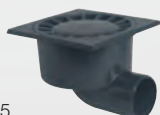


Out ØD	In Ød	Product code			Dimensions					Packaging
		Dark grey	Light grey	Sand	Water seal	Ø De	E	L	H	
50	40	SC504*	SC504G*	SC504S*	17	139	150	32	88	6
75	63	SC756	SC756G	SC756S	19.5	179	200	45	110	6
90	80	SC908	SC908G	SC908S	26	229	250	52	134	6
100	90	SC1009	SC1009G	SC1009S	26	229	250	57	139	6
110	100	SK1110	SK1110G	SK1110S	26	229	250	61	146	2
110	100	SC1110	SC1110G	SC1110S	50	230	300	61	183	2

*Not exceeding 800 kgs of loading

Plain model with horizontal outlet

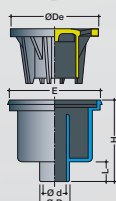
SC1925



Out ØD	In Ød	Product code		Dimensions				Packaging
		Dark grey	Water seal	Ø De	E	L	H	
100	90	SC1925	50	230	250	57	192	2
100	90	SC1930	50	230	300	57	192	2

Model with high water seal with vertical outlet

SC54



Out ØD	In Ød	Product code		Dimensions				Packaging
		Dark grey	Water seal	Ø De	E	L	H	
50	40	SC54	60	139	150	32	131	6
75	63	SC76	60	179	200	45	150	6
90	80	SC98	60	229	250	52	167	6
100	90	SC109	60	229	250	57	172	4

Trapped floor gully with removable basket

SCP11S



Ø spigot outlet	Ø socket outlet	Product code		Packaging
		Dark grey	Sand	
110	100	SCP1110*	SCP11S*	2

*Not exceeding 500 kgs of loading



Inspection rainwater boxes

Model 30 x 30 x 30 inside dimensions



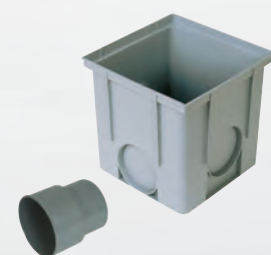
RETX



RERETX

Description	Product code	
	Grey	Sand
Polypropylene inspection box 30 x 30 x 30		
100-125 mm	RETX	
75-90-110 mm	RESV	
Extension piece to clip (+ 15 cm) outlet Ø 100	RERETX	
Pedestrian cover to clip in polypropylene	CORETX	CORETXS
PVC grid class A15	GR30	GR30S
PVC cover class A15	TR30	TR30S

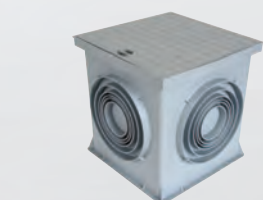
Model 25 x 25 x 25 inside dimensions



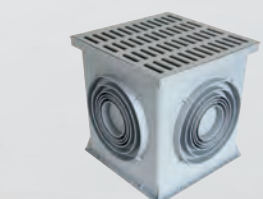
RPCT + ZVT

Description	Product code	
	Grey	Sand
Polypropylene inspection box 25 x 25 x 25	RPCT	
Extension piece to clip (+ 12,5 cm)	RERPCT	
Pedestrian cover to clip in polypropylene	CORPCT	CORPCTS
PVC grid class A15	GR25	GR25S
Connecting coupling for PVC pipe dia. 110 mm	ZVT	

Inspection rainwater box



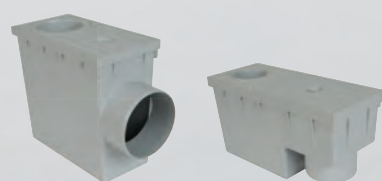
RE4 + TRE4P



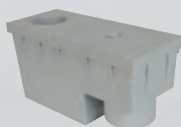
RE4 + GRE4

Description	Product code		
	30 x 30	40 x 40	55 x 55
Polypropylene inspection box	RE3	RE4	RE5
Extension part to clip	REH3	REH4	REH5
PVC cover class A15	TRE3	TRE4	TRE5
Polypropylene pedestrian cover	TRE3P	TRE4P	
PVC grid class A15	GRE3	GRE4	GRE5
Polypropylene pedestrian grid	GRE3P	GRE4P	

Trapped rainwater gullies



RPCRTVH



RPCRTV

Description	Product code
Inlets Ø 80-100 horizontal outlet ø 110	RPCRTVH
Inlets Ø 80-100 vertical outlet ø 110	RPCRTV
Includes access cover and removable baffle plate.	

Non-trapped rainwater gullies



RPCPVV

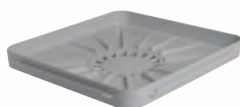
Description	Product code
Inlets Ø 75-80-90-100-110 verticale outlet ø 110	RPCPVV
Includes access cover and leaves basket.	



PVC trapped bucket gully

An essential item for campsites, for garages, the trapped bucket gully, thanks to its original design, is the ideal solution to tap splashing, mop rinsing, bucket emptying, waste. It is also a guard against drain smells.

REL



description	Product code		Dimensions	Outlet	Packaging	
	Light grey	Sand				
Ribbed receiver	REL	RELS	400 x 430	80 90 100	5	

Connection with 4" pipes by means of adaptor 100/110 mm code n° V10

PVC lawn watering point

Square model with tap-type quarter turn and 45° connection

Made of U-PVC, green or sand colour, particularly resistant to UV rays and shocks.

BAC227



Product code		Connection		Outlet		Tap-type	Packaging	
Green	Sand							
BAC227	BAC227S	26 x 34	1"	20 x 27	3/4"	T-handle	6	

Freeze proof model - 20 MM bore

BAI2027



Product code	Connection		Outlet		Tap-type	Packaging	
BAI2027	26 x 34	1"	20 x 27	3/4"	T-handle	2	
BAI2027C	26 x 34	1"	20 x 27	3/4"	Key-opening	2	
BAI2634	26 x 34	1"	26 x 34	1"	T-handle	2	
BAI2634C	26 x 34	1"	26 x 34	1"	Key-opening	2	

Plain model - 15 MM bore

Designed to be set into parks, gardens and lawns, NICOLL lawn watering points, green colour, feature a tap and a water outlet, both of brass, which make for an easy, connection point close to the area to be watered.

BRM2027



Product code	Connection		Outlet		Tap-type	Packaging	
BRM2027	20 x 27	3/4"	20 x 27	3/4"	T-handle	6	



Other Nicoll surface drainage products

Channel drainage system with gratings.
The CONNECTO® range
a modular system all around buildings.

- Widths 130 - 200 mm,
- Lengths 1m - 0,50 m,
- Gratings in PVC, galvanised steel, stainless steel, ductile iron,
- Loading class : from A15 up to C250,
- Comply with standards CE - EN1433.



Your Nicoll's dealer

July 2010



document non contractuel

an *O*Aliaxis company

Head office and plants : P.O. Box 10966 - 37, rue Pierre et Marie Curie - **49309 CHOLET CEDEX FRANCE**
Tél : **33 2 41 63 73 83** - Fax : **33 2 41 63 73 84** - **Website : www.nicoll.fr** - **e-mail : export.nicoll@aliaxis.com**
SAS au capital de 7 683 431€- 060 200 128 RCS Angers