

Disabled people (DP)

GTPMR12GB

SHOWER DRAIN

NEW





SANITARY SOLUTIONS

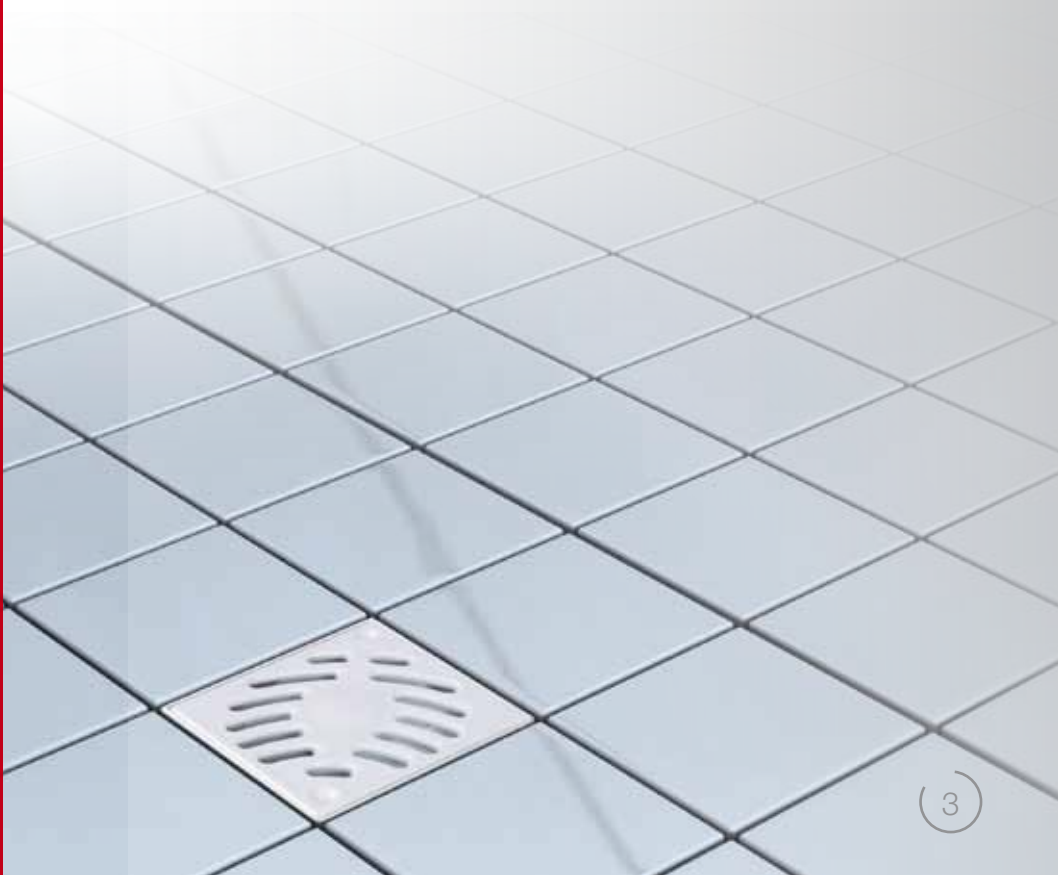
The sanitary sector is a historic specialty of Nicoll and the brand is now a benchmark in the world of plumbing. Our systems have been developed over more than 50 years and have allowed generations of plumbers to work better, faster and to improve their know-how on the building sites. Their performance on all types of buildings, whether new or refurbishment, is based on a tried and proven quality, a genuine source of serenity and time saving. Absolute compliance with standards gives them the certainty that they will install products that are entirely compliant with the current regulations. Finally, an exceptionally wide range allows them to always have the right part at hand and as such makes life easier.

- Sanitary solutions
- Acoustic soil and waste
- Multi-layer
- PVC pressure
- Sanitary device traps
- Washing machines traps
- Sanitary floor gullies
- Toilet pipes and fittings
- Accessories

NEW



STANDARDISATION	4-5
NICOLL SOLUTION	6-7
INSTALLATION	8-9
RANGE	10-11



Standardisation



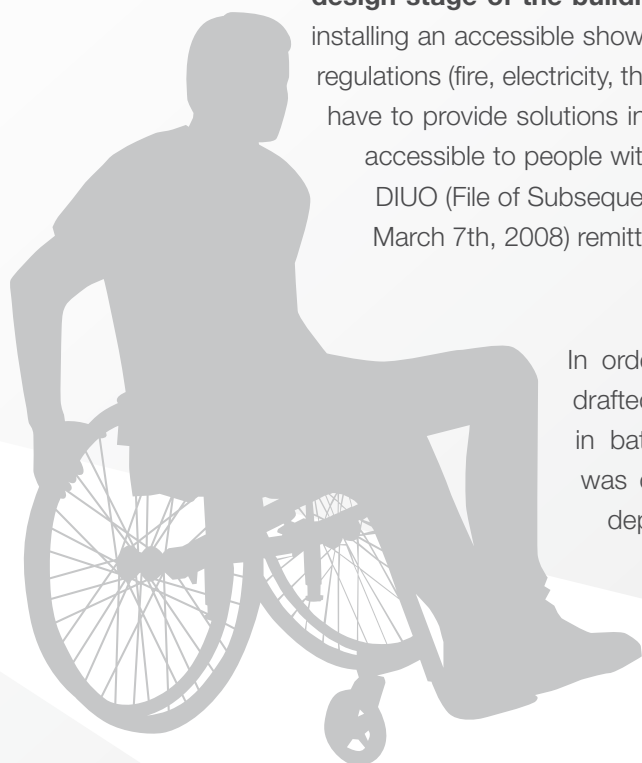
The Borloo Law of February 11th, 2005 for equal rights and opportunities, the participation and citizenship of the disabled people requires from builders and owners of buildings, whether public or private, housing, buildings open to the public (ERP) and even working premises, **to take into account the constraints of people with reduced mobility.** The law is aimed at all buildings whether new or existing and takes into account all types of disabilities (physical, sensory, mental, etc.)



The order of 1 **August , 2006** sets down the measures taken for application of Articles R. 111-18 to R. 111-18-7 of the CCH (French Construction and Housing Code) pertaining to the accessibility to the disabled people of collective housing and individual houses when they are built. It requires, for all housing units for which the building permit request has been filed **starting from January 1st, 2010, the possibility of installing a shower place for people with reduced mobility in a simple manner, without having to alter the structural works.** This requirement therefore does not concern just the housing units that are accessible, but all of the housing units in the building. The accessible shower place does not necessarily have to be installed as original equipment.

The «simple arrangements» requirement makes it necessary to plan **right from the design stage of the building** a solution to arrange the bathroom with the purpose of installing an accessible shower place at a later time. Within the framework of the various regulations (fire, electricity, thermal, acoustics, etc.), the design of the building will as such have to provide solutions including arrangement diagrams for the bathroom to make it accessible to people with reduced mobility. These solutions will be mentioned in the DIUO (File of Subsequent Works on Installations provided for by Order 2008-244 of March 7th, 2008) remitted to the Client.

In order to have the regulations complied with, the CSTB has drafted the accessibility guide for «implementing a walk-in shower in bathrooms for individual use in new buildings». This guide was developed on request of the Urban planning and housing department (DHUP) in compliance with the usual process of concertation with non-profit organizations and stakeholders in the building activity.

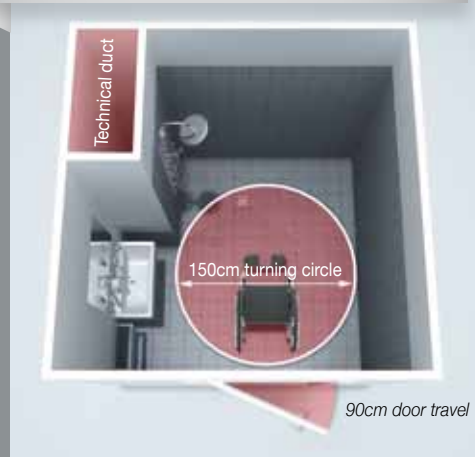


A bathroom with a bathtub that can be transformed into a walk-in shower provides comfort and safety to People with Reduced Mobility.

BEFORE, at the new housing unit delivery.



AFTER, transformation into a PRM accessible bathroom.



Did you know that ?

Extract from the Order of August 1st, 2006, Articles 15 & 27.

"Provisions concerning the adaptability of the bathroom.

In housing units for which a building permit was filed starting from January 1st, 2010, at least one bathroom must be equipped in such a way as to arrange the possibility of installing an accessible shower. When the shower is not installed as original equipment, it must be able to be arranged at a later date without intervention on the structural work. When the housing unit includes several bathrooms, the bathroom equipped as such is located on the accessible floor."

This order defines the same conditions for application in individual houses.



Nicoll solution



Nicoll innovates and offers a complete solution: bathtub drainage system that can be transformed into a walk-in shower in compliance with the plans from the CSTB accessibility guide about «implementing a walk-in shower»:

BEFORE



AFTER



Nicoll offers to install the drain and branch right from the design stage of the building in order to facilitate the process of making the installation accessible to disabled people. The Nicoll device allows you to position a stand-by floor drain connected in D50 to the bathtub, in accordance with the 60.11 DTU for bathtub drains. The function of the stand-by drain outlet is entirely reversible : when the housing unit receives a PRM who wants to change the bathroom in order to make it accessible, all that needs to be done is remove the bathtub and the connections to the floor drain and install the grid and the inner plunger to the drain in order to create a walk-in shower. The seal is provided thanks to its 100% PVC glued connection in accordance with the 60.33 DTU.

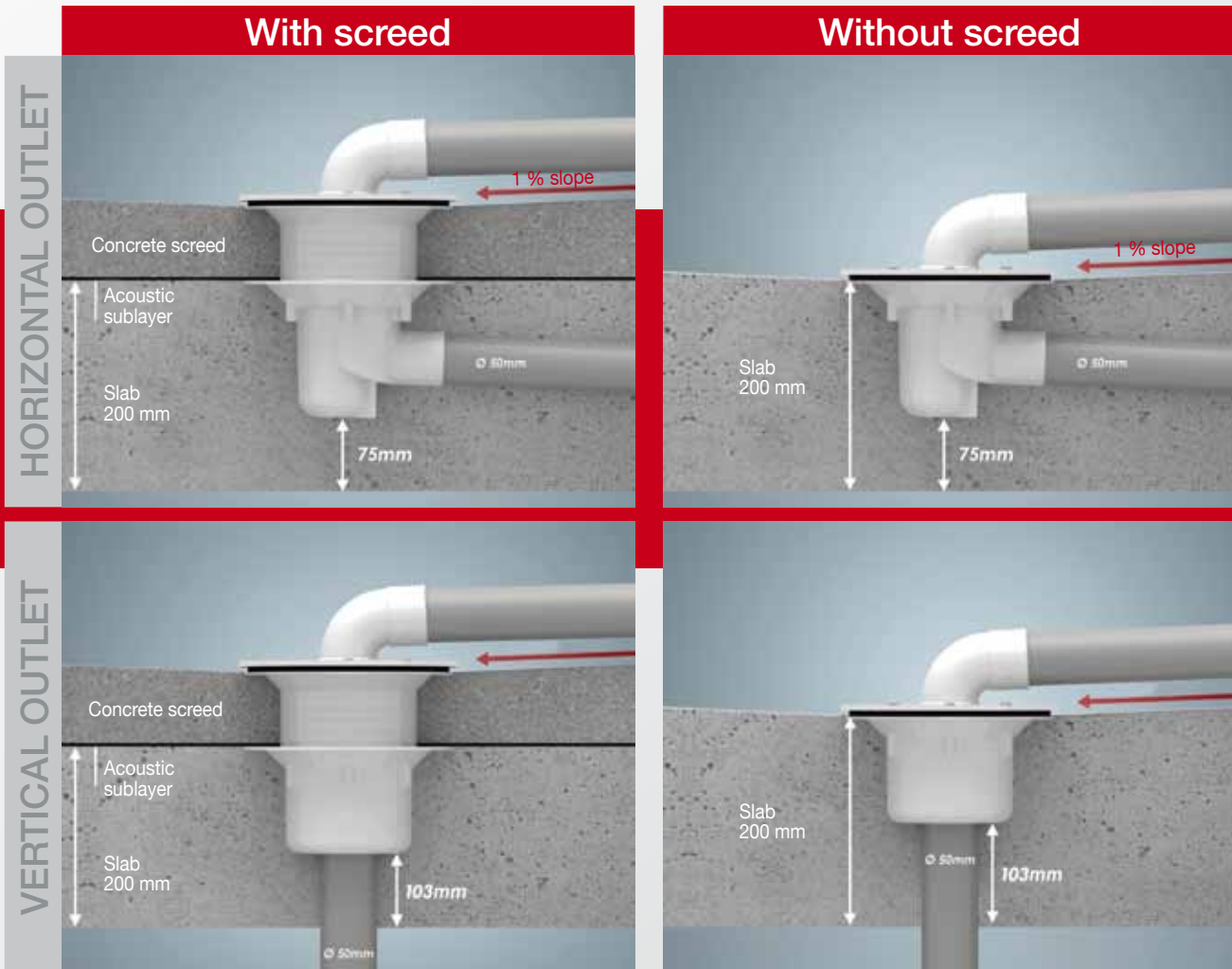


Did you know that ?

The 60.33 DTU authorizes the in slab drainage of grey and black water into PVC collectors (Cf. paragraphs 4.3.2.3 & 4.3.2.4)

"Any coating or recessing part of a network with one or more assemblies inaccessible is prohibited, with the exception of connections made by gluing."

Nicoll knows that each building site is different and that installation methods differ. We offer a drain that is adapted to your project: with a horizontal or vertical outlet, with or without screed, plastic coating or tiling. You can directly install a walk-in shower or make the connection with the bathtub for a later shower implementation.



Did you know that ?

In terms of acoustics, the guide drafted by the CSTB to implement a walk-in shower in bathrooms for individual use in new buildings recommends that "in the absence of precise acoustics measurements, it is recommended to limit the hollow space in such a way to keep a concrete thickness of about 7 cm under the drain and the drainage pipe."



Installation

Solution with a reentrant for installing the device after casting the slab



or



1 - Set a reentrant in place on the floor for the drain (200 diameter tube) and for the Y-junction (tube shaft open).



2 - Cast the slab
3 - Remove the reentrant

4 - Position the drain on its tripod cut to the height of the slab
5 - Affix the protective sticker on the drain
6 - Position the branch and connect it with glue to the drain via the collector
7 - Fill in the reentrant with mortar

Note: the branch can also be placed under the slab --> system compatible with Chutunic



8 - Position the acoustic sublayer right on the edge of the sealing collar of the drain



9 - Position the extension piece and cast the slab with a slope of at least 1%
10 - Position and screw the connection plate on the drain
11 - Connect the bathtub (to the drain)

Solution without a reentrant for installing the device before casting the slab



1 - Cut the tripod to the desired slab height



2 - Position the drain in the tripod
3 - Screw the protective plate on the small plate



4 - Bind and fix the device to the floor



5 - Nail the casing end piece to the floor
6 - Position the branch in the casing end part
7 - Glue the oversleeve
8 - Fix the device to the floor (strip)



9 - Use glue to connect the drain to the branch via the collector --> the device is fixed to the floor



10 - To pour a slab



11 - Put the acoustic sublayer close to the trap socket

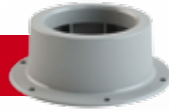


12 - Put the extension piece and pour the concrete screed with a diamond shape slope
13 - Place and screw the connection on the trap
14 - Connect the bathtub (to the drain)



The disabled people product range

CASHING END PART



The casing end part allows a Ø 50 or Ø 100 reentrant to be created in the concrete around the end of the PVC tube. It allows a female socket to be glued into the thickness of the slab after casting.

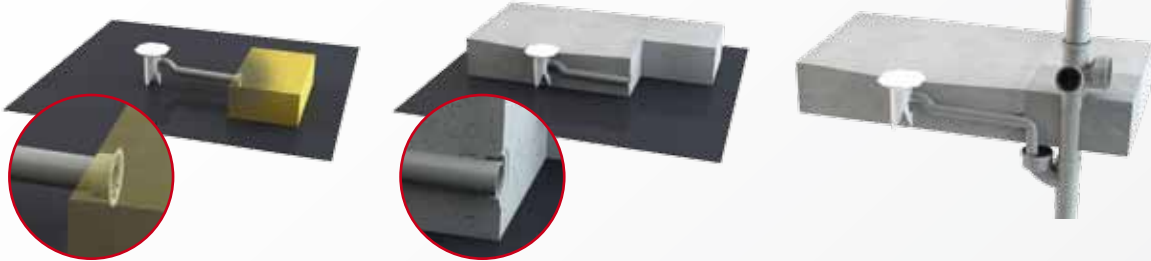
Passing through the slab with a diameter 50 for a crossing through a suspended ceiling (Reference ECEUJ)



With diameter 100 to connect a pre-socketed tube (Reference Kit BT68PMR)



Against the service shaft with diameter 50



SLIDER



The slider for PRM branch allows for easy insertion of the tube into branch (sealed in the slabs) between the lower and upper floors. It provides the mandatory function of an expansion chamber between each floor rod.

Slider (chambre de dilatation)

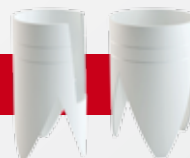


CONNECTION PLATE




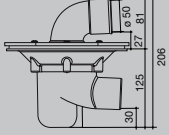

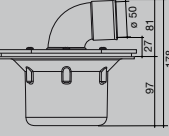

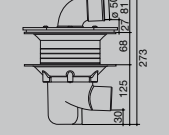

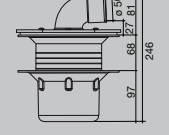

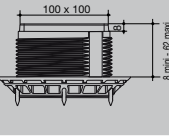

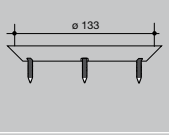

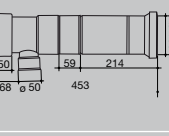

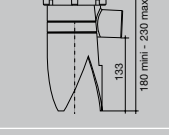

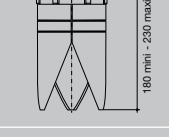

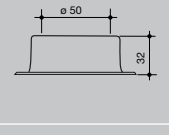

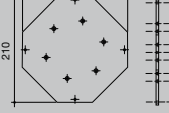
The connection plate for disabled people drain allows the bathtub to be connected to the floor trap and to the drain the water towards the down pipe.

VERTICAL OR HORIZONTAL TRIPOD



In order to adjust the height of the drain, the tripod for a horizontal or vertical outlet drain can be cut to the desired slab height (18/20/23 cm).

For any other request, please contact us on +33 2 41 63 73 25.

		Reference	Designation	Composition
		SIPMRH	Disabled people drain kit - horizontal outlet	Drain body with horizontal outlet, connection plate, protective sticker, sealed screws.
		SIPMRV	Disabled people drain kit - vertical outlet	Drain body with horizontal outlet, connection plate, protective sticker, sealed screws.
		SIPMRHCE	Disabled people drain kit - horizontal outlet with screed	Drain body with horizontal outlet, connection plate, protective sticker, sealed screws.
		SIPMRVCE	Disabled people drain kit - vertical outlet with screed	Drain body with horizontal outlet, connection plate, protective sticker, sealed screws.
		GSICAPMR	Grid kit for Disabled people drain with tiled coating	Sealing recovery ring, riser, white PVC grating 10x10, recovery batt seal, plunger, bell, screws.
		GSITARPMR	Grid kit for Disabled people drain with PVC coating	Sealing recovery ring, white PVC grating , plunger, bell, screws.
		BT68PMR	Disabled people branch kit	Casing end piece diameter 100, slider, oversleeve diameter 100, Y-junction BT68
		TRSICAH	Tripod for horizontal outlet drain	
		TRSICAV	Tripod for vertical outlet drain	
		ECEUJ	Casing end piece diameter 50	
		PLAPSPMR	Connection plate	

Nicoll
also leads
to serenity

Sanitary

Environment

Building



BUILDING - SANITARY - ENVIRONMENT

NICOLL is ISO 9001v2008 and ISO14001v2004 certified

Head Office and factories: 37, rue Pierre & Marie Curie - BP 10966 - 49309 CHOLET Cedex // Tel. 02 41 63 73 83 - Fax 02 41 63 73 57

For Requests documentation: export.nicoll@alixaxis.com // Technical enquiries: tech-com.nicoll@alixaxis.com

SAS (business corporation) with a capital of €7,683,431 - 060 200 128 RCS Angers

an **Aliaxis** company