

**Nicoll** **NEW IN 2011** BUILDING  
GUTTER STACK CONNECTORS

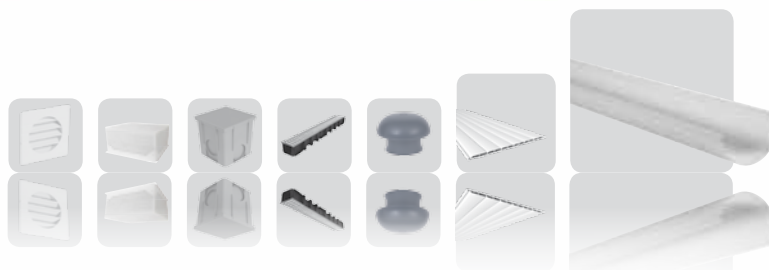


**NEW**

Nicoll is innovating and developing gutter stack connectors by providing aesthetic, practical and technological details.

- Elbows with integrated socket do not require the use of pre-socketed tubes.
- The clamps allow for quick, easy and invisible fastening via a rear snap-fit.
- The drop pipe foot provides optimal flow.

**BUILDING**  
SANITATION  
ENVIRONMENT



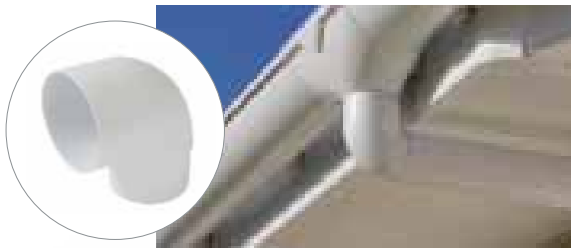
**Nicoll**  
BÂTIMENT - SANITAIRE - ENVIRONNEMENT



# AESTHETIC GUTTER DROPS

These small details make a big difference.

The new Nicoll gutter drops provide aesthetic, practical and technological details. They adapt to the various Nicoll gutter systems with  $\varnothing$  80 or  $\varnothing$  100 drops (Ovation<sup>®</sup> LG28 and LG38, half-round LG25 and LG33, Vodalis<sup>®</sup> LG29, Elite<sup>®</sup> LG30 and the square gutter LG70).



## AESTHETIC ELBOW

Aesthetic elbows do not require the use of pre-socketed tubes. As such, they can be used instead of female-female and male-female elbows. Aesthetic elbows exist for angles at 45°, 67°30' and 87°30'.

The absence of connector chamfers makes them invisible and contributes to the aesthetics of the entire system.



## AESTHETIC CLAMP

The new clamps allow for quick, easy and invisible fastening via a rear snap-fit.

The widened base provides better hold against the wall and is particularly adapted in the case of exterior insulation. (Available with insert for fastening with screw plugs and without insert for fastening with screws).



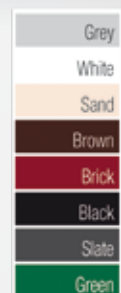
## DROP PIPE FOOT

The drop pipe foot has been revamped while allowing for optimal flow and clean drainage. It is an aesthetic accessory for the roof bend in particular.



## NICOLL ADVANTAGES

- Design of the drop is more fluid.
- Resistance to extreme temperature differences.
- Available in 9 colours.
- 100% recyclable materials.
- Resistance to UV for excellent colour resistance over time.
- 10-year guarantee.





# INSTALLATION

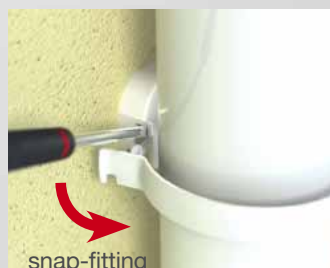
## INSTALLATION OF THE AESTHETIC GUTTER DROPS

### Preparing the S-hook connector



- Prepare the departure S by connecting the 2 elbows with a tube at least 42 mm long for the 80 diameter and at least 46 mm for the 100 diameter.
- For easy removal, do not glue the first elbow to the outlet base.
- However, the elbow sockets must absolutely be glued to the stack tube.

### Installing stack clamps



- Locate the positioning of the first stack clamp.
- It has to be located under the S-hook connector.
- Use a chalk line and the square to note the vertical alignment on the wall.
- Do a trial assembly of the stack pipes in order to locate the position of the clamps. Place a clamp on each connector in order to prevent the stack items from slipping.
- Fasten the clamps to the wall with fixing brackets or dowel pins.
- To guide the downpipe, distribute the clamps about every 2 metres.
- The fastening of the tube is done by simply snap-fitting the clamp. It can only be unsnapped with a screwdriver.

### Installing the drop pipe foot



- Nest the drop pipe foot into the stack tube.
- Fasten the drop pipe foot with screws, respecting the expansion mark. The seal is inserted between the wall and the drop pipe foot in order to absorb impacts.



# GUTTER DROPS

Ø 80 and Ø 100 stack tubes

Name	GREY	WHITE	SAND	BROWN	SLATE	BRICK	BLACK	GREEN	COPPER	
<b>Ø 80 ET Ø 100 STACK TUBES</b>										
Length 4 m - Ø 80	TD80	TD80B	TD80S	TD80M	TD80A	TD80R	TD80N	TD80V	TD80C	
Length 2 m - Ø 80	TD802	TD802B	TD802S	TD802M	TD802A	TD802R	TD802N	TD802V	TD802C	
Length 4 m - Ø 100	TD100	TD100B	TD100S	TD100M	TD100A	TD100R	TD100N	TD100V	TD100C	
Length 2 m - Ø 100	TD102		TD102S							
<b>Ø 80 AND Ø 100 STACK CONNECTORS</b>										
<b>NEW !</b> Elbow at 45° - Ø 80	CR4GT1	CR4GT1B	CR4GT1S	CR4GT1M	CR4GT1A	CR4GT1R	CR4GT1N	CR4GT1V	CR4GT1C	
	CT4GT1	CT4GT1B	CT4GT1S	CT4GT1M	CT4GT1A	CT4GT1R	CT4GT1N	CT4GT1V	CT4GT1C	
<b>NEW !</b> Elbow at 67°30' - Ø 80	CR6GT1	CR6GT1B	CR6GT1S	CR6GT1M	CR6GT1A	CR6GT1R	CR6GT1N	CR6GT1V	CR6GT1C	
	CT6GT1	CT6GT1B	CT6GT1S	CT6GT1M	CT6GT1A	CT6GT1R	CT6GT1N	CT6GT1V	CT6GT1C	
<b>NEW !</b> Elbow at 87°30' - Ø 80	CR8GT1	CR8GT1B	CR8GT1S	CR8GT1M	CR8GT1A	CR8GT1R	CR8GT1N	CR8GT1V	CR8GT1C	
	CT8GT1	CT8GT1B	CT8GT1S	CT8GT1M	CT8GT1A	CT8GT1R	CT8GT1N	CT8GT1V	CT8GT1C	
<b>NEW !</b> Y-junction 67°30' - Ø 80	BR16GT1	BR16GT1B	BR16GT1S	BR16GT1M	BR16GT1A	BR16GT1R	BR16GT1N	BR16GT1V	BR16GT1C	
	BT16GT1	BT16GT1B	BT16GT1S	BT16GT1M	BT16GT1A	BT16GT1R	BT16GT1N	BT16GT1V	BT16GT1C	
<b>STACK CLAMPS</b>										
<b>NEW !</b> Clamp Ø 80 to be snap-fit with insert	CORGT1	CORGT1B	CORGT1S	CORGT1M	CORGT1A	CORGT1R	CORGT1N	CORGT1V	CORGT1C	
	CORGT1SI	CORGT1BSI	CORGT1SSI	CORGT1MSI	CORGT1ASI	CORGT1RSI	CORGT1NSI	CORGT1VSI	CORGT1CSI	
<b>NEW !</b> Clamp Ø 100 to be snap-fit with insert	COTGT1	COTGT1B	COTGT1S	COTGT1M	COTGT1A	COTGT1R	COTGT1N	COTGT1V	COTGT1C	
	COTGT1SI	COTGT1BSI	COTGT1SSI	COTGT1MSI	COTGT1ASI	COTGT1RSI	COTGT1NSI	COTGT1VSI	COTGT1CSI	
<b>FOOT FOR Ø 80 AND Ø 100 DROP PIPE</b>										
<b>NEW !</b> Foot for Ø 80 drop pipe	RWS801	RWS801B	RWS801S	RWS801M	RWS801A	RWS801R	RWS801N	RWS801V	RWS801C	
	RWS1001	RWS1001B	RWS1001S	RWS1001M	RWS1001A	RWS1001R	RWS1001N	RWS1001V	RWS1001C	



BÂTIMENT - SANITAIRE - ENVIRONNEMENT

NICOLL is ISO 9001v2008 and ISO14001v2004 certified

Head office and factories: 37, rue Pierre & Marie Curie - BP 10966 - 49309 CHOLET Cedex // Tel. 02 41 63 73 83 - FAX 02 41 63 73 84

Requests for documentation: info@nicoll.fr // Technical enquiries: tech-com.nicoll@alixaxis.com

SAS (business corporation) with a capital of € 7,683,431 - 060 200 128 RCS Angers

