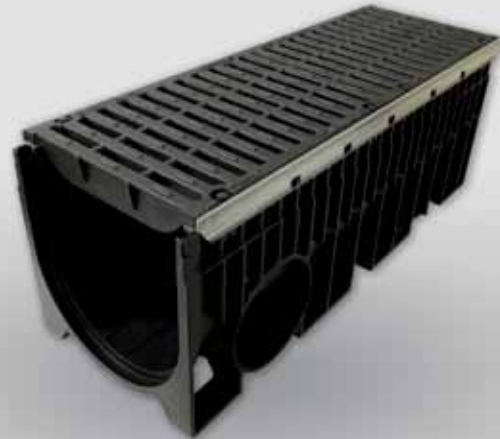


New range of drainage channels Kenadrain® E600

Environment

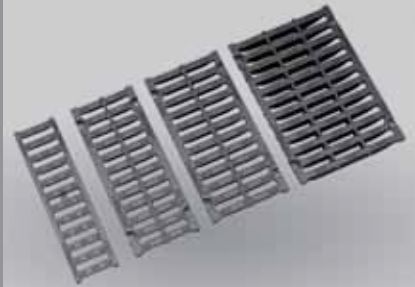
NEW



The new range of drainage channels Kenadrain® is designed for areas subject to significant axle loads (E600 load rating) enabling use of the width from 100 to 300.

Advantages :

- Robust : complies with NF EN 1433
- Efficient : excellent hydraulic capacity
- Practical : interlocked, supplied already fitted to the drainage channel
- Safe : complies with accessibility requirements for people with reduced mobility, high mechanical strength, slip-resistant
- Durable : resistant to the main chemical agents
- Aesthetic and functional : an innovative design in a black matt colour



New range of drainage channels Kenadrain® E600

Environment



DESCRIPTION

The new range of drainage channels Kenadrain® is designed for areas subject to significant axle loads, such as factory, ports, docks, etc.

Kenadrain offers an extensive range, created with a focus on durability, safety and protection of the environment in compliance with European standard EN 1433.

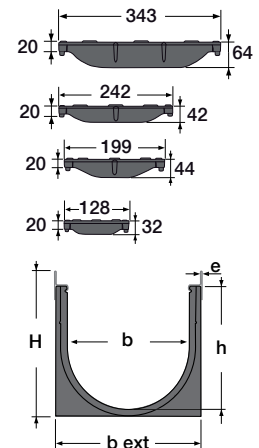
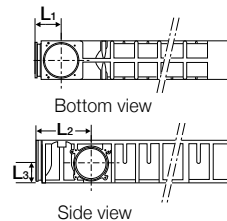
The range Kenadrain E600 is available in several widths (100, 150, 200 and 300).

This new range can be easily integrated into areas subject to medium loads due to its simplicity and sturdiness :

- **Efficient** : excellent hydraulic capacity, absorption surface area from 408 to 1,258 cm²/ml
- **Practical** : - interlocked, supplied already fitted to the drainage channel,
- bolted using 4 black-coloured screws (except 100 width version: 1 screw + 1 bracket),
- nuts and screws are treated with an anti-corrosion and anti-friction coating to facilitate removal.
- **Safe** : - complies with accessibility requirements for people with reduced mobility
- high mechanical strength, slip-resistant
- **Durable** : resistant to the main chemical agents
- **Aesthetic** : matt black colour, innovative design
- **100% recyclable**

TECHNICAL CHARACTERISTICS

For 1 m of drainage channel, with E600 cast iron gratings :



	Weight per 1 m (kg)	Height (mm)		Width (mm)		ø of cap (mm)		Outlets (mm)			Absorption surface area (cm ² /ml)
		H	h	b	b ext	Vertical	Horizontal	Vertical	Side		
								L1	L2	L3	
DR102EF	15,3	170	132	98	136	100-110-125	100-110	88	190	67	408
DR152EF	25	205	165	163	207	160	100-110-125	142	263	67	618
DR202EF	31,2	237	200	202	249	200	160	180	330	84	810
DR302EF	56,9	369	320	304	361	200	160	220	192	111	1 258



The rabbet :

In order to optimise the performance, the rabbet has been adapted to an load rating E600. This enables better distribution of the load applied to the concrete foundation. This rabbet enables is compatible with tamper-resistant screws and sand traps.

THE NICOLL EXTRA

Two patented systems :

- The locking system with 4 locking screws, prevents the gratings from becoming loose due to the vibrations from traffic (for widths of 150, 200, and 300).
- The clipping ensures the alignment of the drainage channel, during the male-femelle locking, thereby...



Photo credits : Nicoll / Non-binding document

