

New range of brass crimp fittings for the FLUXO® multilayer system

Sanitary

NEW



The new range of FLUXO® crimp fittings boasts a wealth of new functions to ensure excellent quality and safety for those installing sanitary and heating networks.

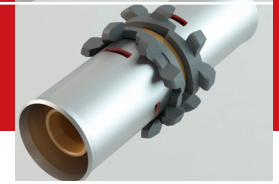
Advantages

- During pressure testing a **leak visualisation system** shows if crimping has been forgotten.
- **The ring breaks off** and falls apart from the crimp fitting.
- **The coloured indicator** is concealed from the visualization window when the pipe is properly inserted into the fitting.
- **The coloured indicator reappears below the window** if the pipe is withdrawn before crimping.
- **Bulk** reduction.
- Improved **pressure drops**.
- Ring colours **indicate diameters**.



New range of fittings for Fluxo® multilayer pipes

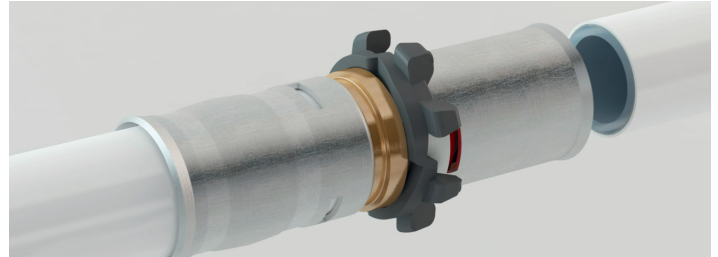
Sanitary



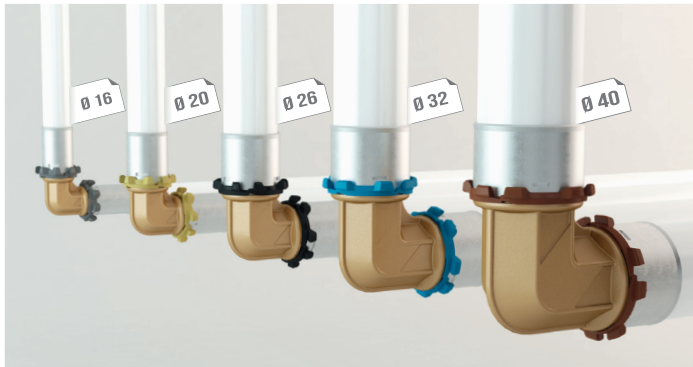
This new range of fittings is the result of many years of research and development by French teams. These fittings incorporate all the various functions needed for safe and easy implementation.

The following features remain in the range:

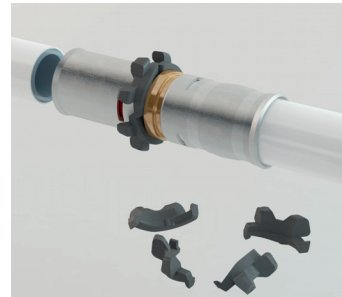
- 'TH' crimping profile
- Brass and fitting manufactured in Western Europe
- Stainless steel ring
- 2 EPDM peroxide-cured O-rings



DESCRIPTION



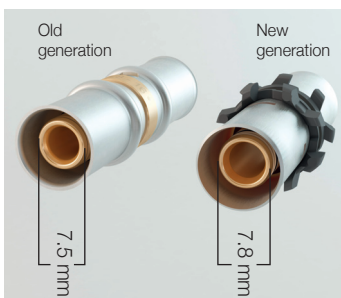
Different colour rings to show diameters



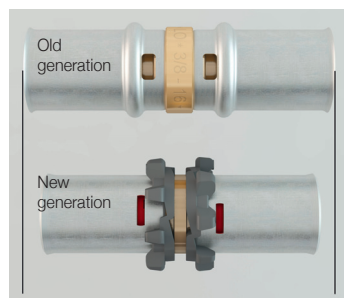
Breakable ring to ensure correct crimping



Leak before crimping



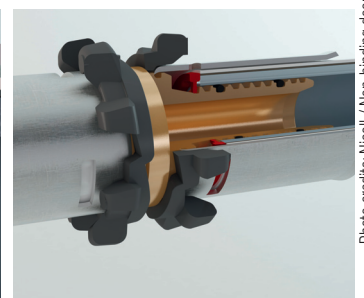
Low pressure drop



Compact fittings



Chamfer allowing a good flow



Dynamic indicator of correct insertion (red)

Photo credits: Nicoll / Non-binding document

NICOLL ADVANTAGES

This generation of fittings offers safety features in case users forget to perform crimping or fail to do it properly. In that way, product returns and other after sales work become things of the past...



BUILDING - SANITARY - ENVIRONMENT



Head office and factories: 37, rue Pierre et Marie Curie - BP 10966 - 49309 CHOLET Cedex - France // Tel. +33 (0)2 41 63 73 83 - Fax +33 (0)2 41 63 73 84
info@nicoll.fr // Technical enquiries: tech-com.nicoll@alixaxis.com // SAS (PLC) with a capital of €7,683,431 - 060 200 128 RCS Angers

an *OAlixaxis* company