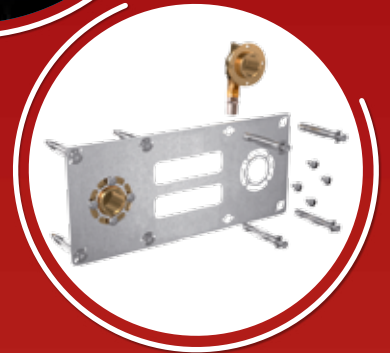


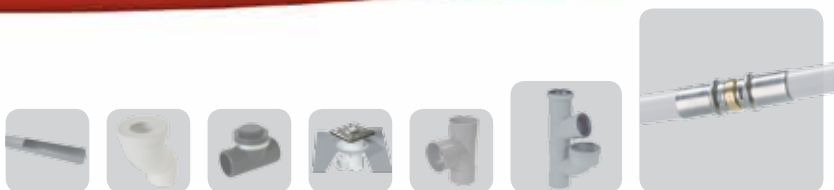
**PLUMBING ACCESSORIES KIT FOR PLASTERBOARD PARTITION WALL**



**NEW**

Nicoll offers a bulkhead connector solution allowing plumbing accessories to be fitted.

- ① This solution makes it possible to work on facades and to fix the plumbing accessories on BA13 or BA25 plasterboard (or wood panel) with a predefined centre distance of 150mm (for Ø16 pipe and ½" fittings)
- ① Minimum thickness of the support plate, facilitating installation of the tiles
- ① Very quick and easy to install
- ① Guaranteed solidity and a perfect finish
- ① The plate can be cut (with a tool) for a single outlet (toilet, washing machine, etc.)



# SANITARY PLUMBING ACCESSORIES KIT FOR PLASTERBOARD PARTITION WALL



## SHOWER PLATE FOR FASTENING PLATE WALL

16x1\2" (15/21)      FLPC1501615F      S1



THIS KIT CONTAINS :

1 plate - 8 expansion anchors with screws for plate fastening - 2 special F 1/2" elbows to crimp for Fluxo® with 8 fastening screws on the plate.

## DESCRIPTION AND USE

The purpose of this new part in the FLUXO range is to facilitate the installation of plumbing accessories (shower or tub) on plasterboard. The possibility of intervening on the facade and the narrowness of the plate make it an ideal part for professionals, both plumbers and tilers.

## ADVANTAGES

- Very quick and easy to install
- Solid and perfect finish
- Very thin support plate (1 mm) facilitating tiling
- Simplified management of the organisation between the trades (drywall workers, plumber, tiler)
- The plate can be cut (with a tool) for a single outlet (toilet, washing machine, etc.)
- The connector can be rotated on the fastening plate in order to adapt to the inlet supply angle

## INSTALLATION

**1** Drill two holes 63mm in diameter in the plasterboard wall using a hole cutter (dimensions for the centre distance opposite).



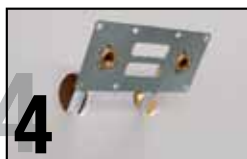
**2** Remove the Fluxo tubes through the holes and adjust the length of the tubes so as to be able to position the crimping pliers.



**3** Position the elbows on the pipes and crimp.



**4** Fasten the recessing elbows on the plate without tightening them (screws provided). Never fold Fluxo pipes.



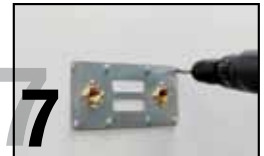
**5** Present the plate horizontally, using a level.



**6** Drill the eight fastening holes in the wall, making sure not to pierce the tubes.



**7** Fasten the plate using the screws and anchors provided. Remove the screws when the anchors are expanded, so that the assembly is flatter.



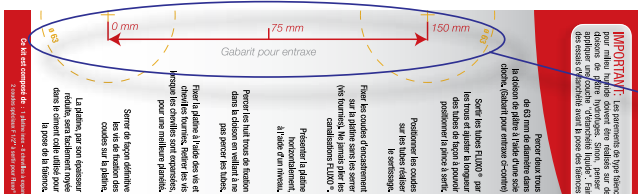
**8** Finally tighten the fastening screws for the elbows on the plate.



**9** Due to its reduced thickness, the plate can be embedded easily in the cement adhesive used for tiling.



## HINT



Use the 150 mm centre distance template incorporated into the packaging of the bag for risk-free drilling with the hole cutter.



BUILDING - SANITARY - ENVIRONMENT



Head office and factories : 37, rue Pierre et Marie Curie - BP 10966 - 49309 CHOLET Cedex // Tél. 02 41 63 73 83 - FAX 02 41 63 73 84 - www.nicoll.fr  
Email : info@nicoll.fr // Technical information : tech-com.nicoll@aliaxis.com // SAS (PLC) with a capital of 7 683 431 € - 060 200 128 RCS Angers